

Service Bulletin

Number: 1731

Date Issued: 7-16-14

Product Affected: *Expanse Transmitter*

Reason For Bulletin: *New Expanse Battery Does Not Fit*

Serial Numbers: Service will start using on repairs and replacements.

Reference SCO: n/a

Description: New “blue” battery does not fit inside Expanse transmitter without some modifications.

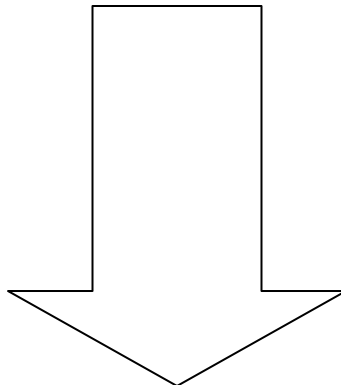
Reason for Change:
To allow new battery to fit within the Expanse unit. New battery is a larger than the current one.

Background/Cause:
Supplier recommended we start using a new battery.

Solution:
Remove/cut out structural tabs on inside of battery compartment to allow larger battery to fit.

Installation Procedure:

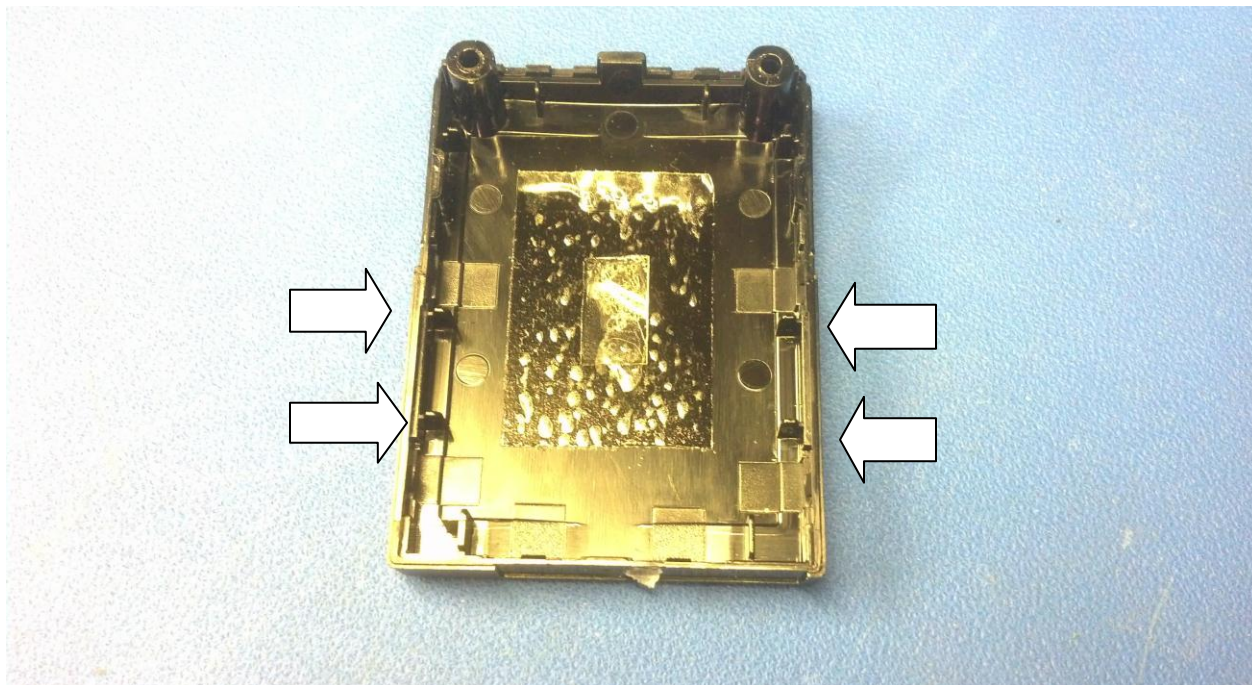
- 1) Open the transmitter unit by removing the two screws (1.5mm hex) to expose the inside battery.



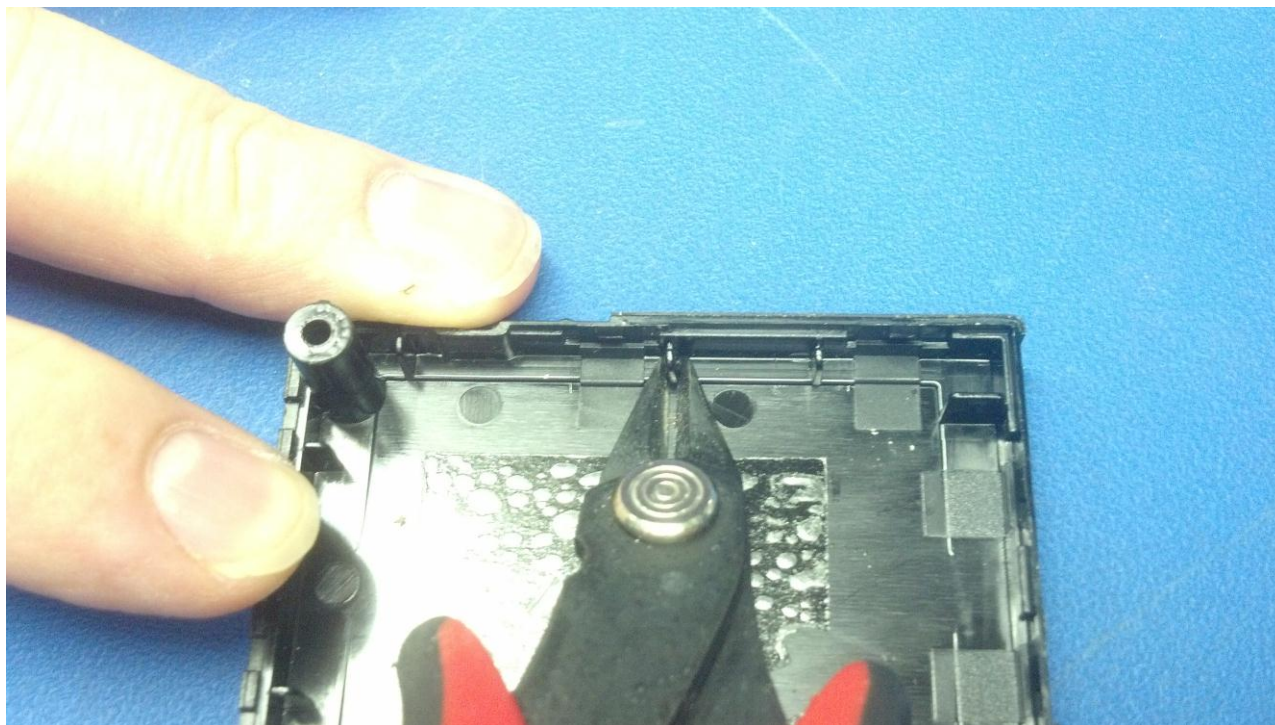
- 2) Remove the old battery shown below. This older battery will have a translucent cover. The new battery has a bright blue cover.



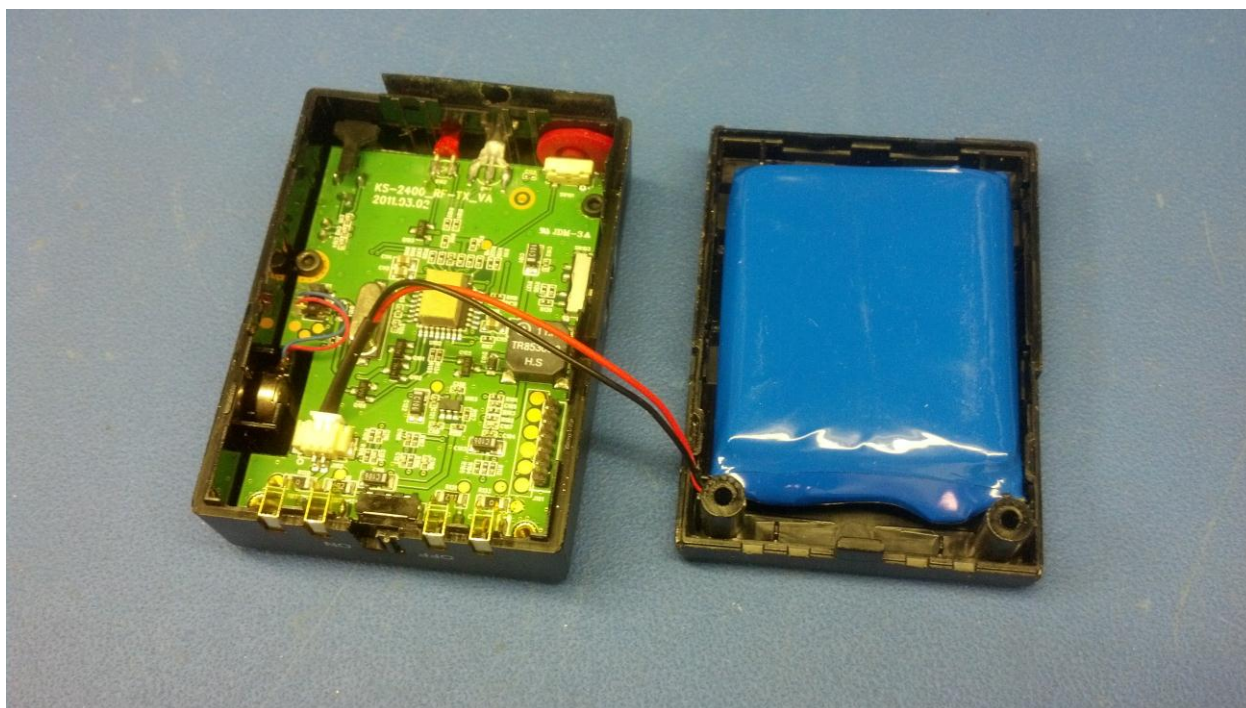
- 3) Take a pair of side cutters and remove the four side tabs that hold the battery in place as shown below. The new battery will not fit into this space unless these four tabs are removed.



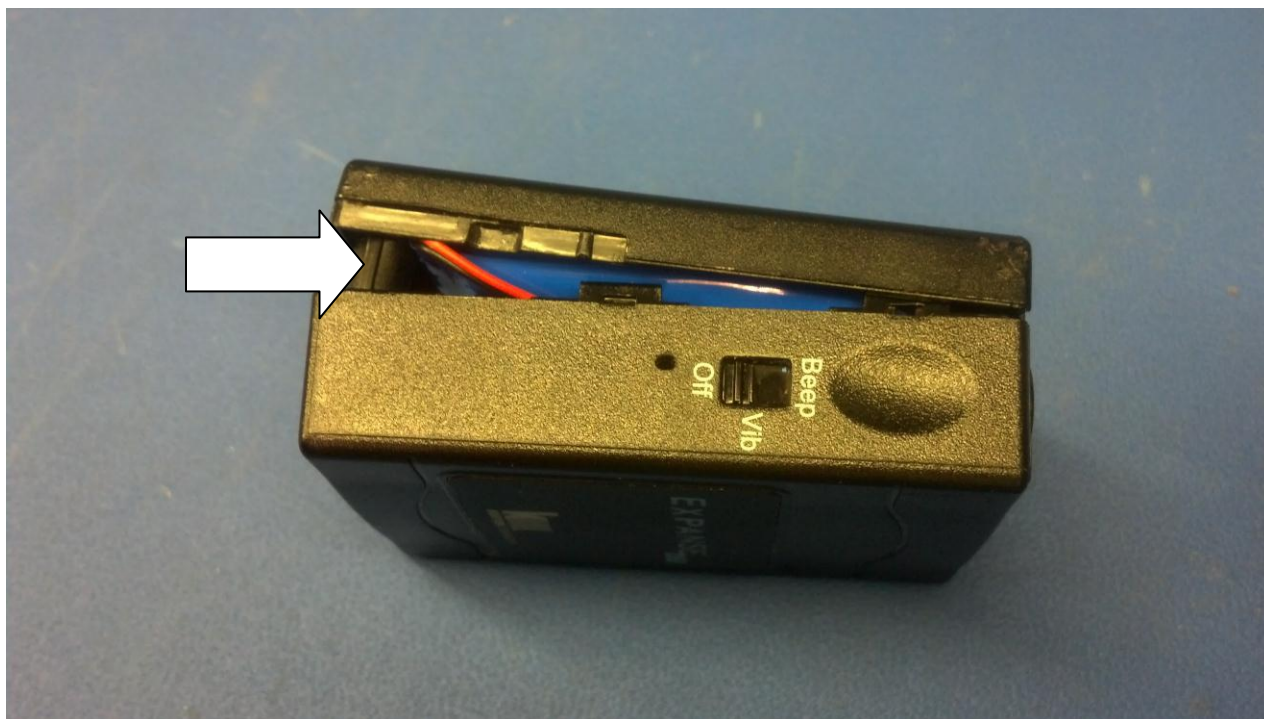
- 4) Using side cutters make two cuts (one horizontal and one vertical) on each tab as shown below which will allow the removal of the tab.



- 5) The new battery should then fit snugly in the new space after the 4 tabs are removed.



- 6) The new battery will have the same connector as the old battery so should connect to the PCB connector without issue. Please be careful not to pinch the wires when closing the case.



Owner: D. Gaskins

Customer Service: TSS

Field Service: n/a