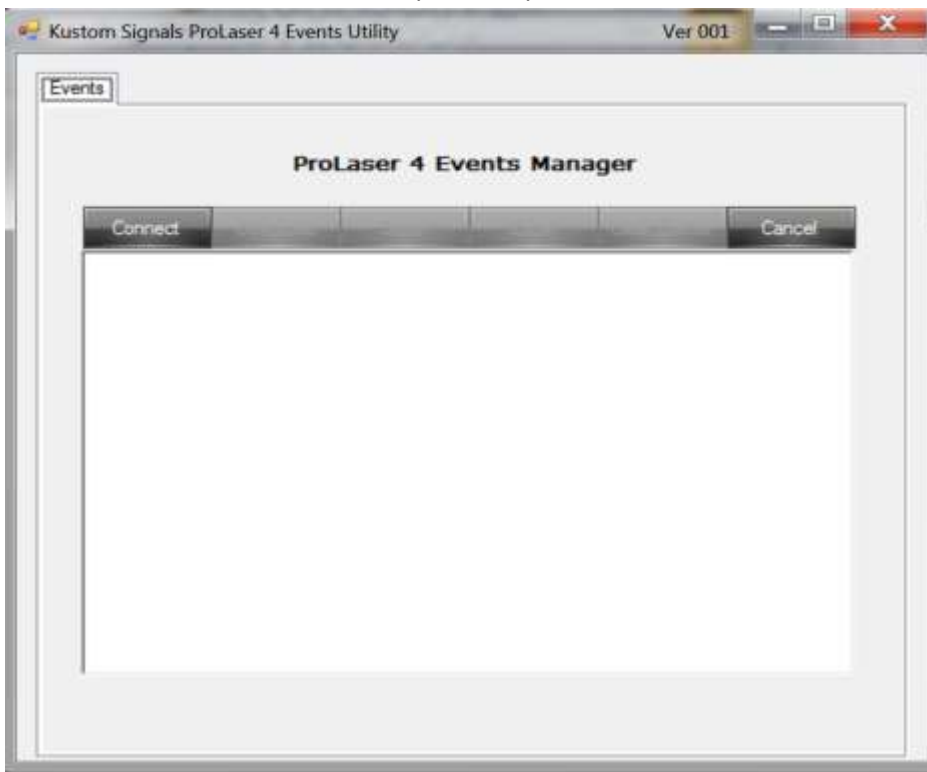


014-1068-00 Operation Instructions

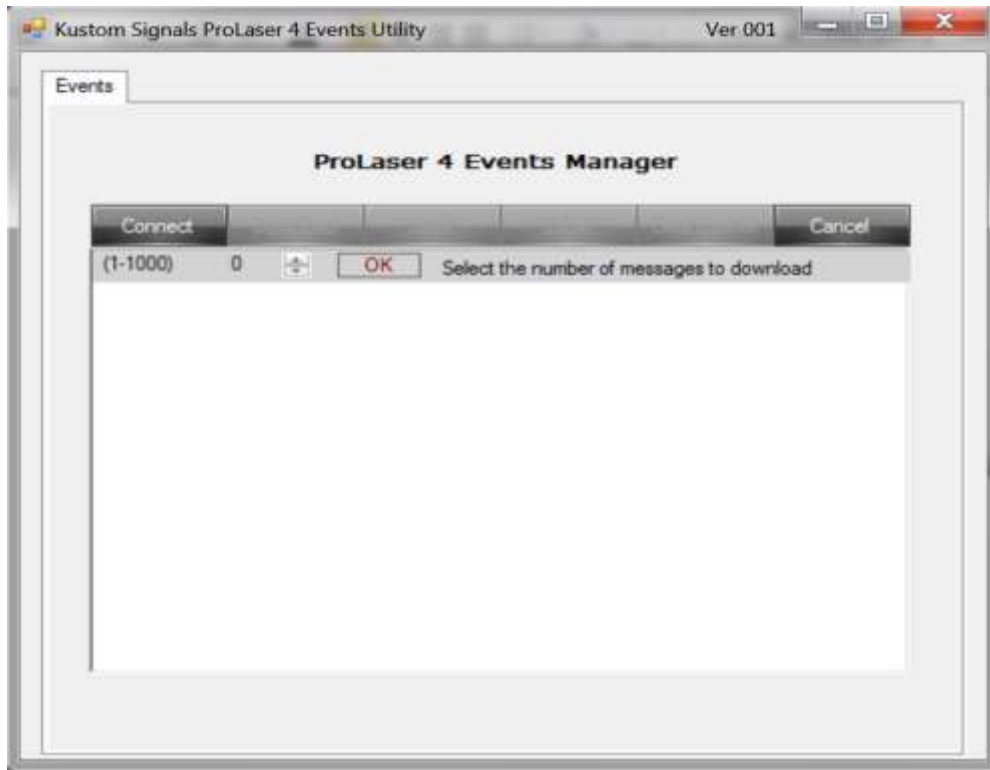
Events Utility for ProLaser4

The ProLaser4 (PL4) has the ability to store up to 1,000 events in EEPROM memory. The events can be downloaded via USB by issuing a command to the PL4. The Kustom Signals Events Utility for ProLaser4 is a desktop application that enables events downloading without the need to use a terminal program and memorize the command format.

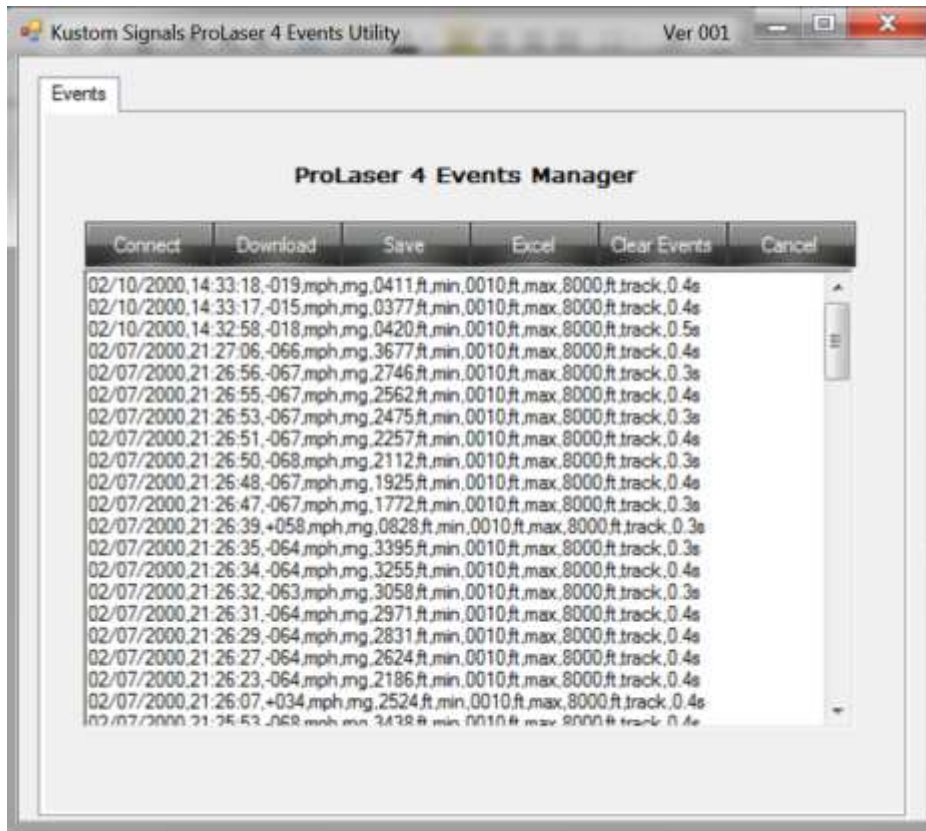
- Once installed, invoke the Events Utility.
- Connect a PL4 to an available USB port and power it on.



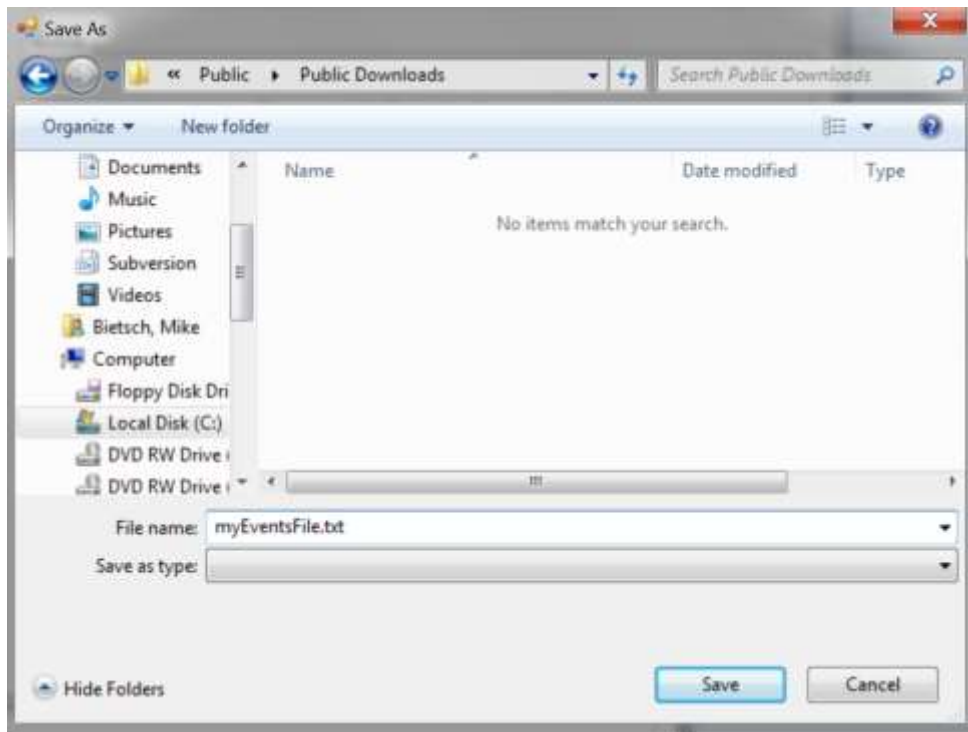
-
- When completely booted up, click the 'Connect' button.



-
- Type in the number of events to download, or use the up and down arrows to increase or decrease the number.
- Click 'OK'. An extended set of buttons will appear.
- Click 'Download' to download the number of events that were entered in the previous step.



-
- To save the events to a text file, click 'Save.' A file save dialog will appear. Navigate to the location where the file is to be saved and, after entering a file name, click 'Save'.
-



-
- To upload the events into an Excel spreadsheet, click 'Excel.' Wait until the events finish uploading into the spreadsheet before attempting to work with the data. Any attempt to interact with the spreadsheet before it finishes downloading will cause an Excel runtime error.

	A	B	C	D	E	F	G	H
1	Date	Time	Speed	Units	Range	Units	Track	Units
2	02/10/2000	14:33:18	-19 mph		411 ft			0.4 sec
3	02/10/2000	14:33:17	-15 mph		377 ft			0.4 sec
4	02/10/2000	14:32:58	-18 mph		420 ft			0.5 sec
5	02/07/2000	21:27:06	-66 mph		3677 ft			0.4 sec
6	02/07/2000	21:26:56	-67 mph		2746 ft			0.3 sec
7	02/07/2000	21:26:55	-67 mph		2562 ft			0.4 sec
8	02/07/2000	21:26:53	-67 mph		2475 ft			0.3 sec
9	02/07/2000	21:26:51	-67 mph		2257 ft			0.4 sec
10	02/07/2000	21:26:50	-68 mph		2112 ft			0.3 sec
11	02/07/2000	21:26:48	-67 mph		1925 ft			0.4 sec
12	02/07/2000	21:26:47	-67 mph		1772 ft			0.3 sec
13	02/07/2000	21:26:39	58 mph		828 ft			0.3 sec
14	02/07/2000	21:26:35	-64 mph		3395 ft			0.3 sec
15	02/07/2000	21:26:34	-64 mph		3255 ft			0.4 sec
16	02/07/2000	21:26:32	-63 mph		3058 ft			0.3 sec

- Use Excel to save the spreadsheet if desired.
- To clear the events in the PL4, click 'Clear Events.' The Events Utility will verify that the operator wishes to erase all events.



-
- Click 'Yes' or 'No' as desired.
- Click the 'Cancel' button to disconnect from the PL4.